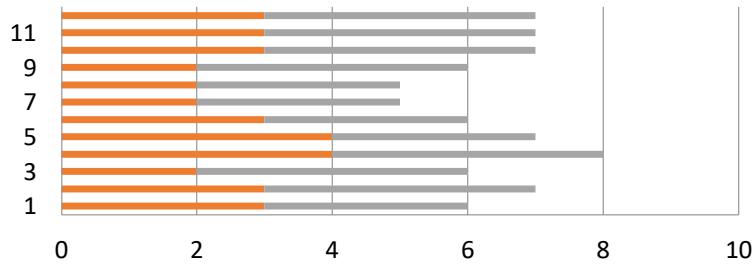


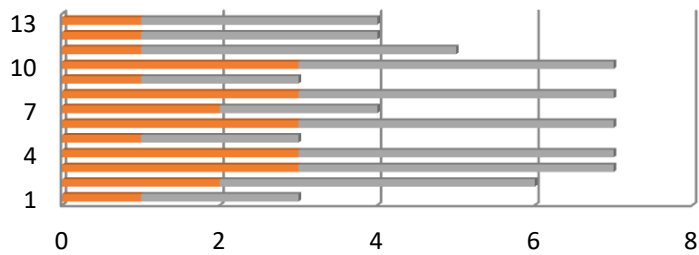
GRAFICI PROVE TRASVERSALI CLASSI PRIME A.S. 2016-17

Prove trasversali 1A



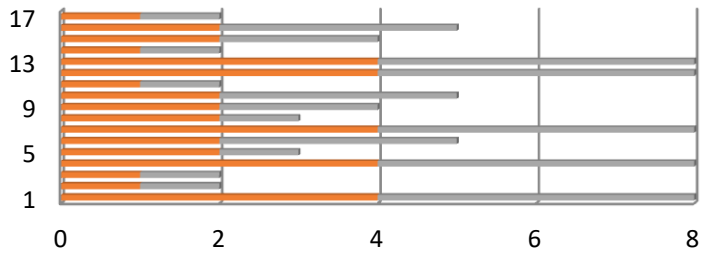
	1	2	3	4	5	6	7	8	9	10	11	12
■ alunni												
■ fascia in entrata	3	3	2	4	4	3	2	2	2	3	3	3
■ fascia in uscita	3	4	4	4	3	3	3	3	4	4	4	4

Prove trasversali 1B



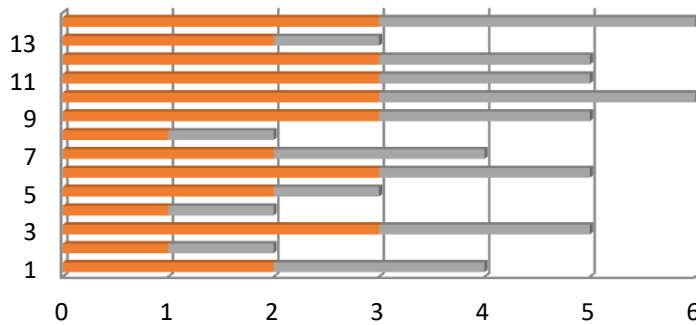
	1	2	3	4	5	6	7	8	9	10	11	12	13
■ alunni													
■ fascia in entrata	1	2	3	3	1	3	2	3	1	3	1	1	1
■ fascia in uscita	2	4	4	4	2	4	2	4	2	4	4	3	3

Prove trasversali 1C



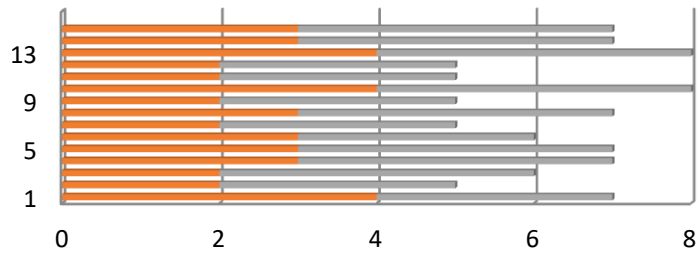
	1	2	3	4	5	6	7	8	9	10	11	12	13	14	15	16	17
■ alunni																	
■ fascia in entrata	4	1	1	4	2	2	4	2	2	2	1	4	4	1	2	2	1
■ fascia in uscita	4	1	1	4	1	3	4	1	2	3	1	4	4	1	2	3	1

Prove trasversali 1D



	1	2	3	4	5	6	7	8	9	10	11	12	13	14
■ ALUNNI 1D														
■ fascia in entrata	2	1	3	1	2	3	2	1	3	3	3	3	2	3
■ fascia in uscita	2	1	2	1	1	2	2	1	2	3	2	2	1	3

Prove trasversali 1E



	1	2	3	4	5	6	7	8	9	10	11	12	13	14	15	16
■ Alunni																
■ Fascia in entrata	4	2	2	3	3	3	2	3	2	4	2	2	4	3	3	
■ fascia in uscita	3	3	4	4	4	3	3	4	3	4	3	3	4	4	4	