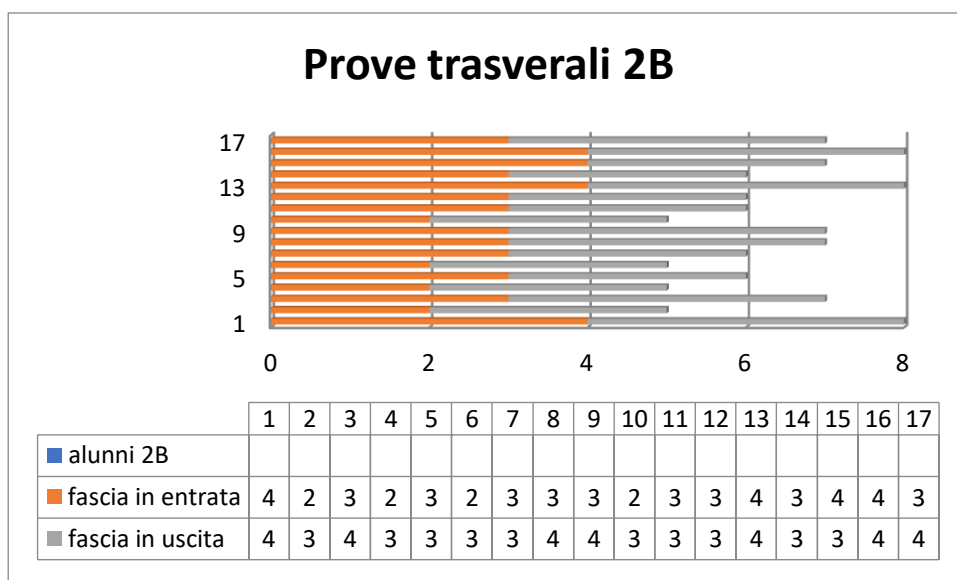
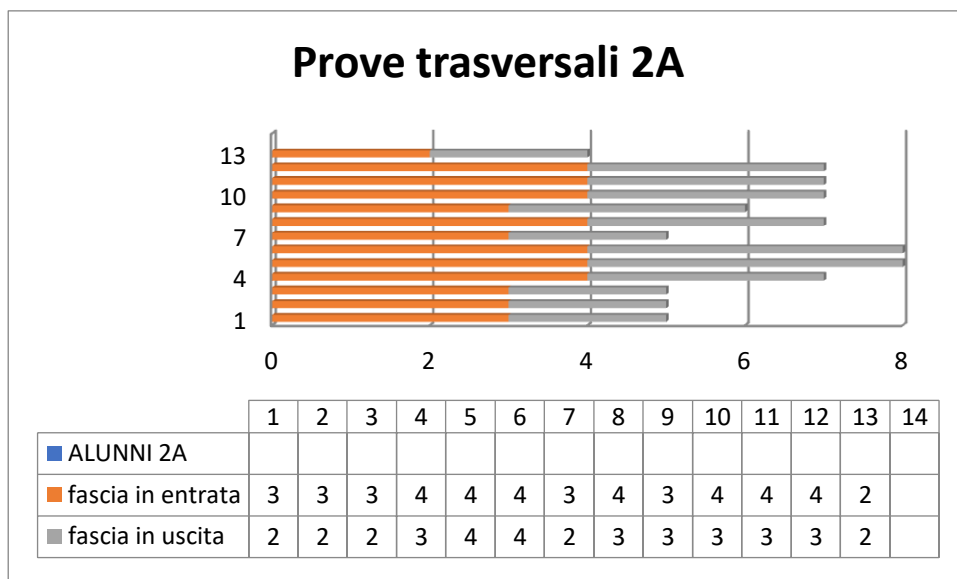
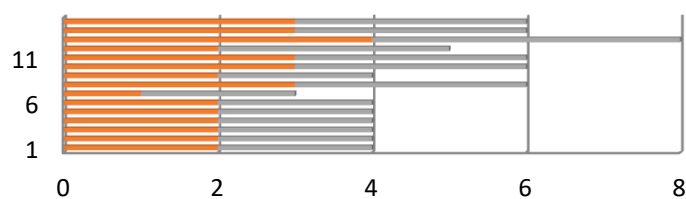


Prove trasversali classi seconde scuola secondaria a.s. 2016-17

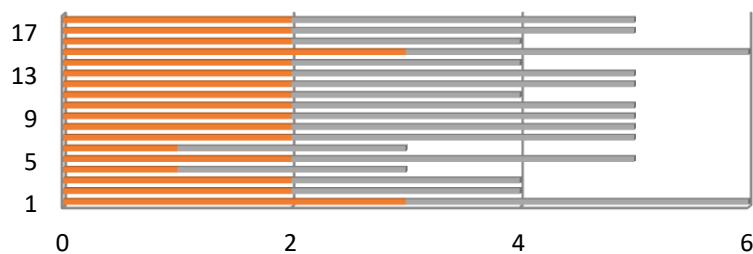


## Prove trasversali 2D



	1	2	3	4	5	6	7	8	9	10	11	12	13	14	15
■ CLASSE 2 D															
■ fascia in entrata	2	2	2	2	2	2	1	3	2	3	3	2	4	3	3
■ fascia in uscita	2	2	2	2	2	2	2	3	2	3	3	3	4	3	3

## Prove trasversali 2E



	1	2	3	4	5	6	7	8	9	10	11	12	13	14	15	16	17	18
■ ALUNNI 2E																		
■ ingresso	3	2	2	1	2	1	2	2	2	2	2	2	2	2	3	2	2	2
■ uscita	3	2	2	2	3	2	3	3	3	3	2	3	3	2	3	2	3	3